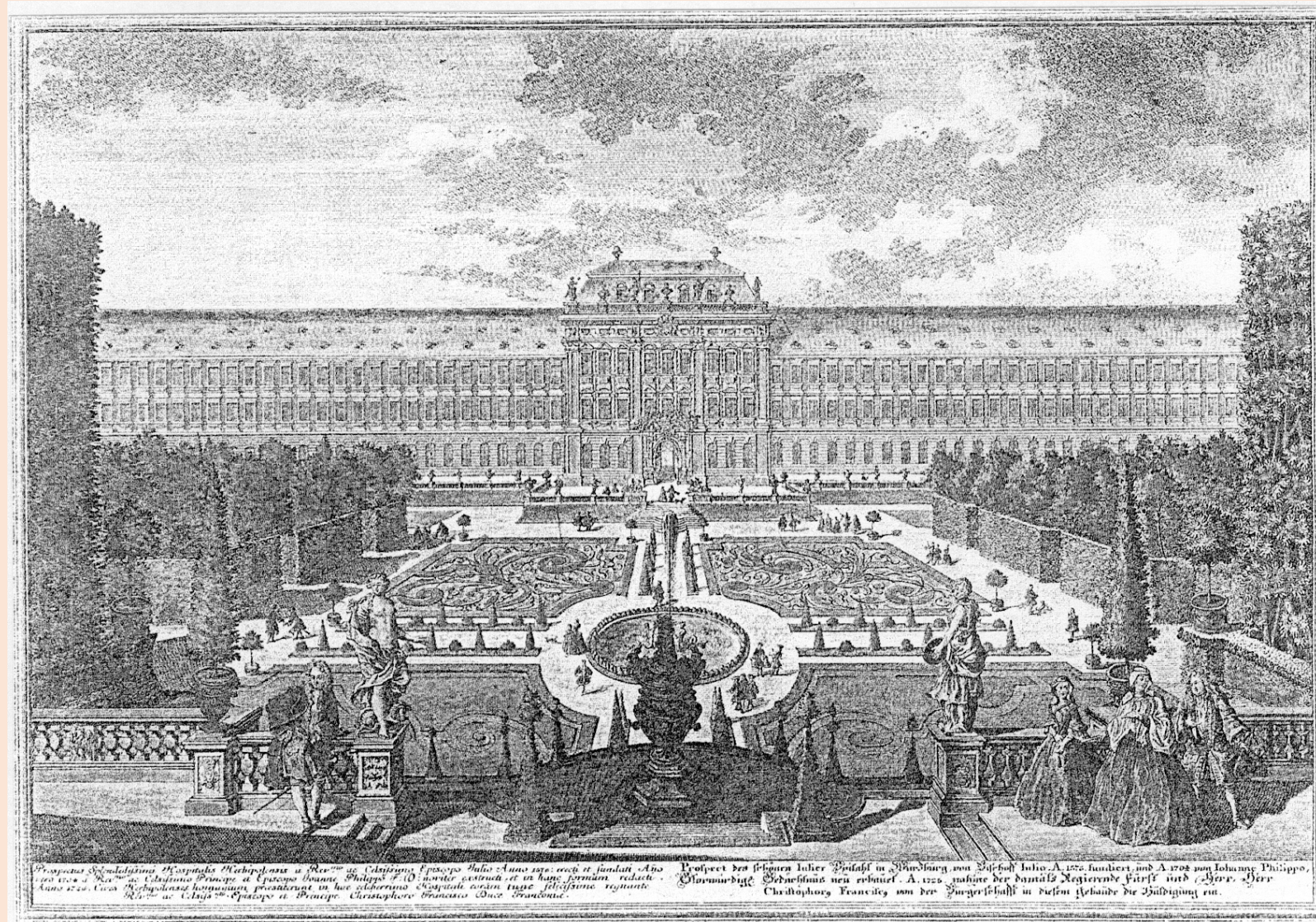






# The beginnings



Juliussspital  
(municipal hospital)

*Hortus medicus*

Engraving by S. Kleiner  
around 1725



# Certificate of incorporation

Wir Jois Bartholomaei Erlam Beringest Medicina Doctoris  
et Professoris bey P. Hofschule zu Ertzbischofflichen  
Lehrstühlen, die in der hiesigen Hofschule zu Ertzbischofflichen  
mit Hocht. Doctoris Erlam Beringest sammtliche gemachte, Trauben  
und Säure aus Hottent abzugeben und per se zu den  
Lehrstühlen der hiesigen Hofschule zu Ertzbischofflichen  
und der hiesigen Medicinalischen facultät zu Ertzbischofflichen  
und zu Ertzbischofflichen in der hiesigen Hofschule zu Ertzbischofflichen  
Lehrstühlen, sollen diesen so weit: als es die Hofschule zu Ertzbischofflichen  
selben zu solchen und zu Ertzbischofflichen ist und den hiesigen  
Lehrstühlen zu Ertzbischofflichen, zu Ertzbischofflichen lassen, und gegen  
Abrechnung eines Jahres des Ertzbischofflichen, welche  
gabelform zu Ertzbischofflichen, zu Ertzbischofflichen  
besagt P. Hofschule zu Ertzbischofflichen, zu Ertzbischofflichen  
Lehrstühlen zu Ertzbischofflichen, zu Ertzbischofflichen  
Ertzbischofflichen zu Ertzbischofflichen, zu Ertzbischofflichen

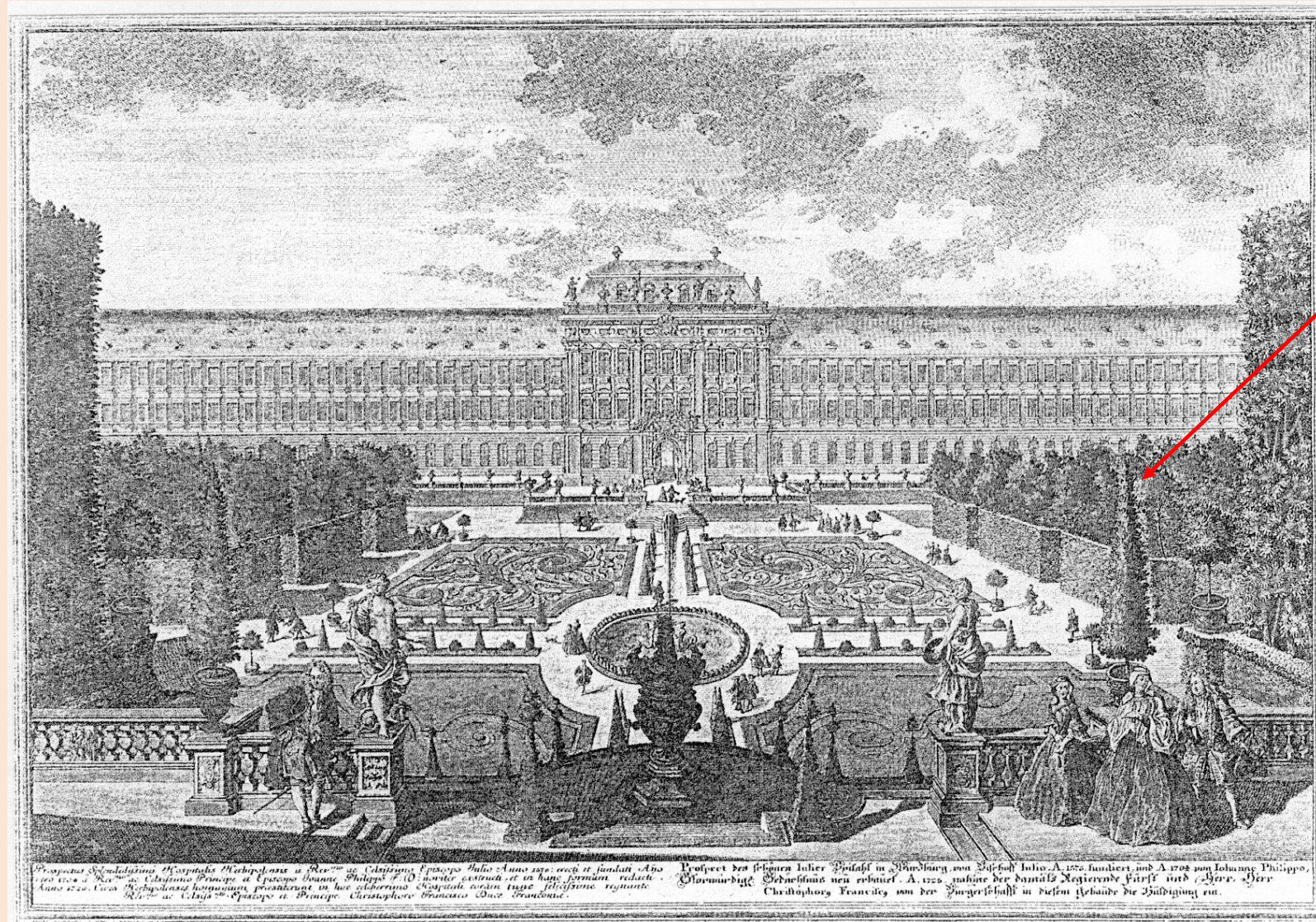
August 6, 1696

signed by Prince-Bishop

Johann Gottfried II von Guttenberg  
(1684-1698)



# The Old Botanical Garden



Juliussspital  
(municipal hospital)

Botanical Garden

Faculty of Medicine

since 1850 Faculty of  
Natural Sciences

since 1972  
Faculty of Biology

Engraving by S. Kleiner  
around 1725

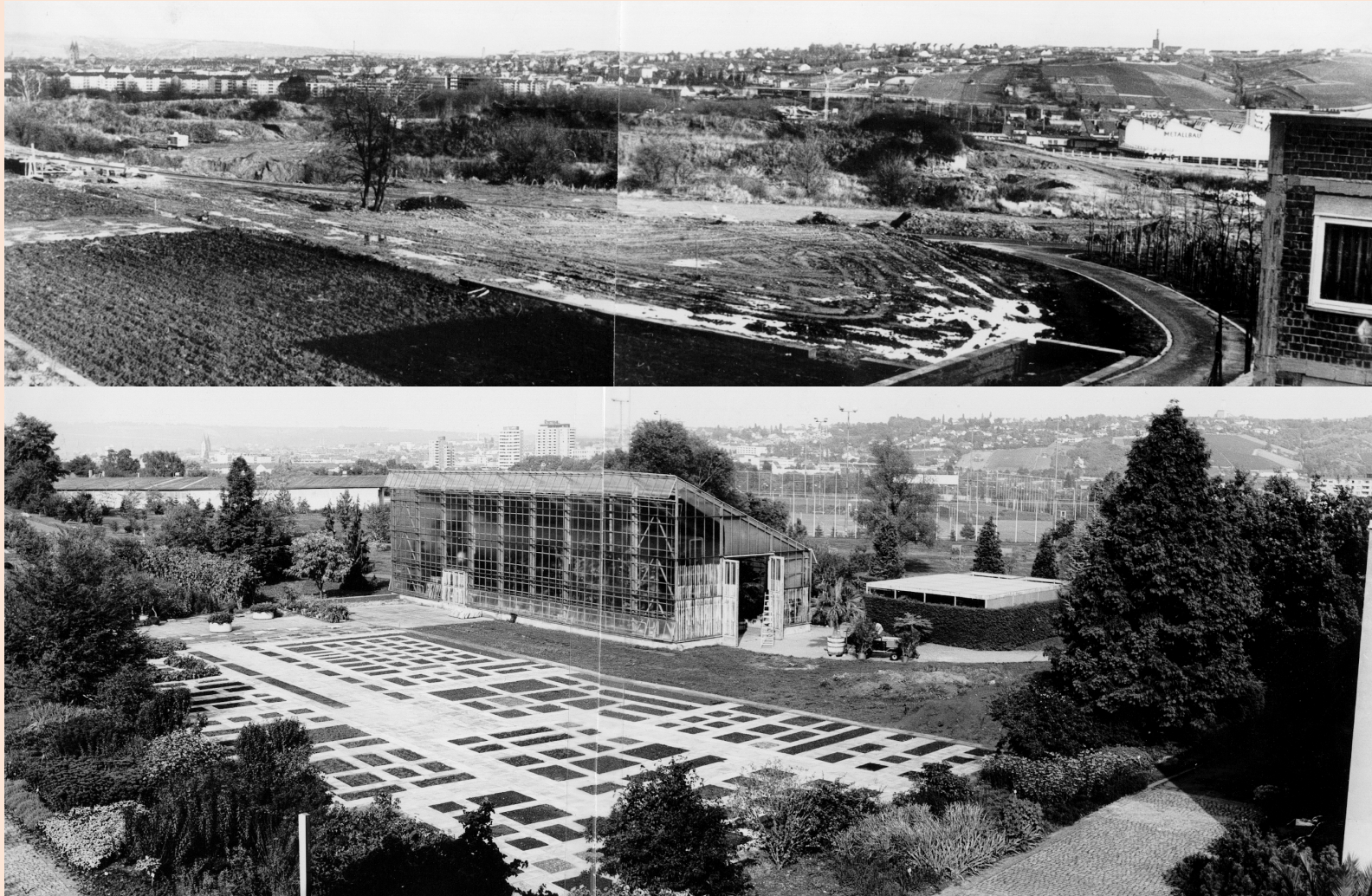


# The catastrophe: March 16, 1945





# Relocation starting in 1960: Former clay pit and old abandoned vineyard



Establishment finished  
ca. 1971



# Some data

Outdoor area

9 ha

Greenhouse area

2,500 m<sup>2</sup>

Staff

+ - 15 gardeners

1 technical manager

1 scientific curator: Dr. Gerd Vogg



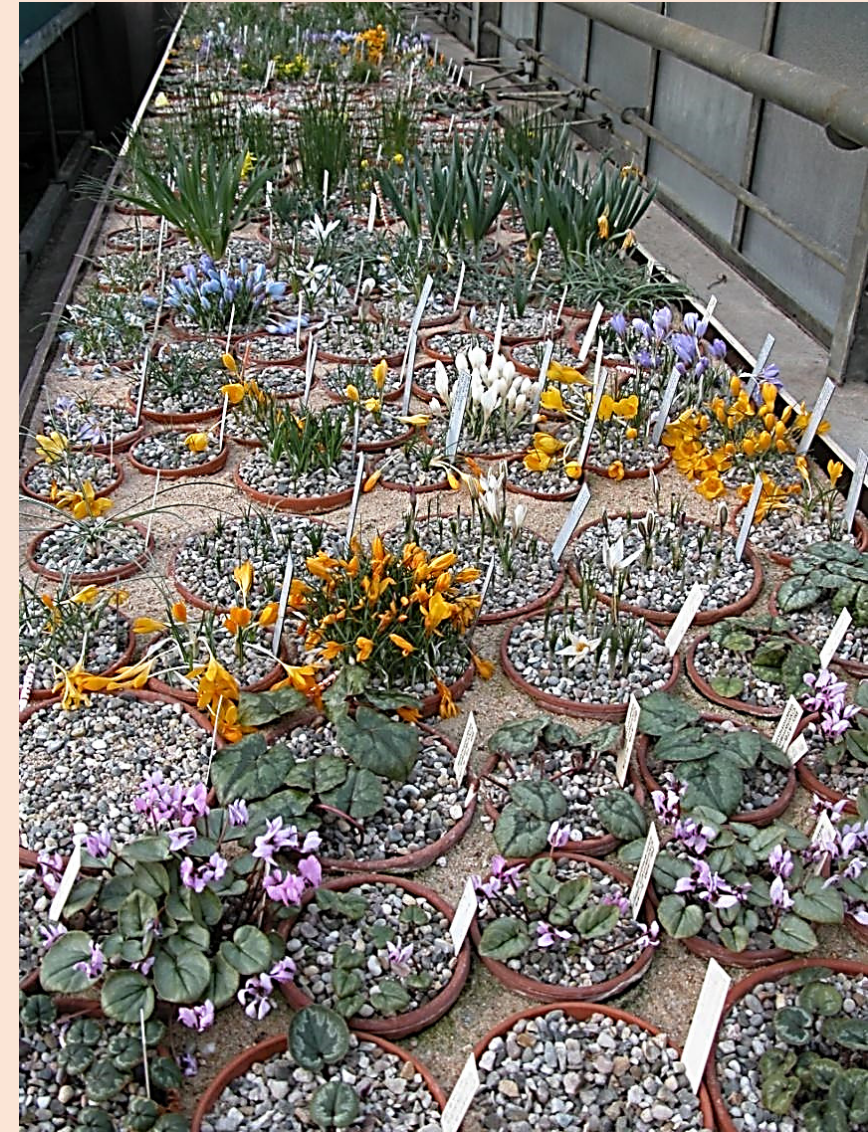
# *A multispecies garden*

Number of species 8,940  
with 12,000 accessions

Genera 2,352

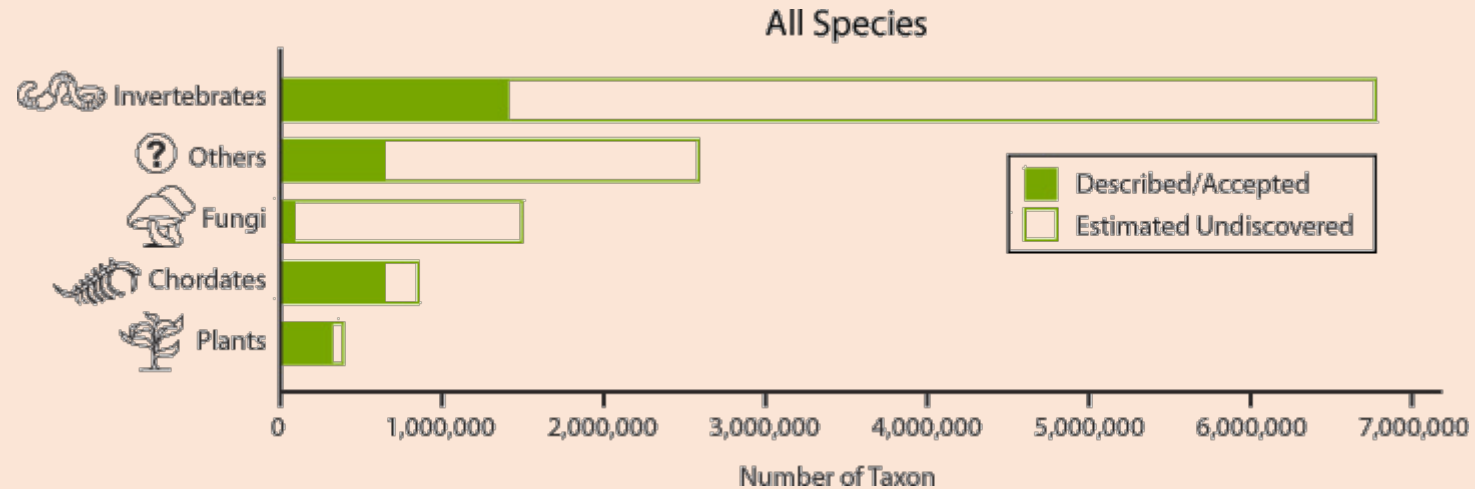
Families 363

from all vegetation zones  
and continents  
(except Antarctica)





# *A multispecies world*



435,000 land plant species on Earth

about 40% "exceedingly rare":

observed and recorded less than five times



# Biodiversity

a measure of variety of life on Earth at

- genetic (genetic variability)
  - species (species diversity)
  - ecosystem (ecosystem diversity)
- level.

More than 99.9% of all species that ever lived on Earth,  
amounting to over five billion species,  
are estimated to be extinct.



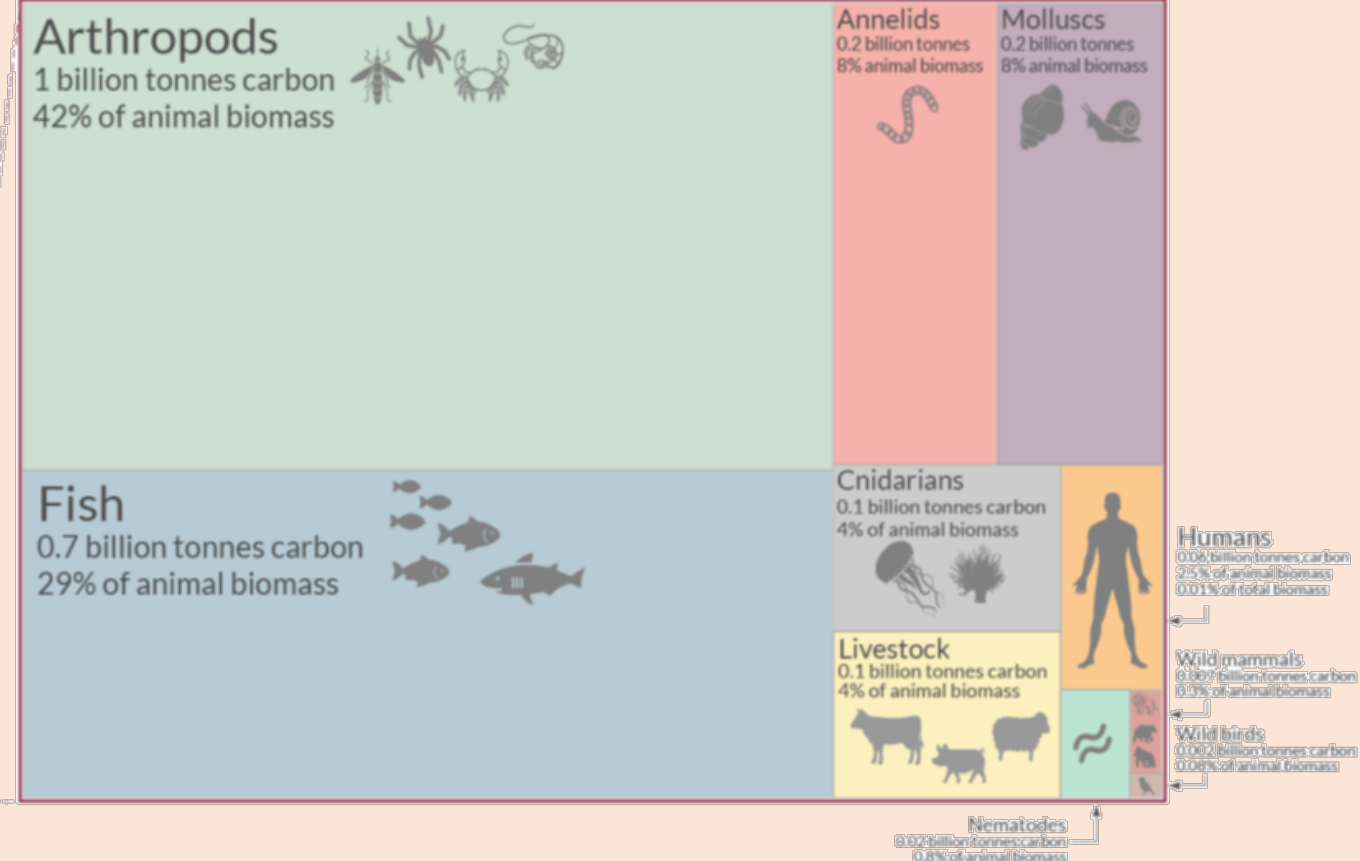
# Life on Earth: the distribution of all global biomass

Biomass is measured in tonnes of carbon. The global distribution of Earth's biomass is shown by group of organism (taxa).

Global biomass: 546 billion tonnes of carbon



Animal biomass: 2 billion tonnes of carbon (0.4% of total biomass)

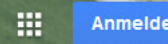
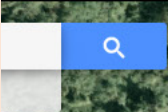


Data source: Bar-On, Y. M., Phillips, R., & Milo, R. (2018). The biomass distribution on Earth. *Proceedings of the National Academy of Sciences*. Icons from Noun Project.

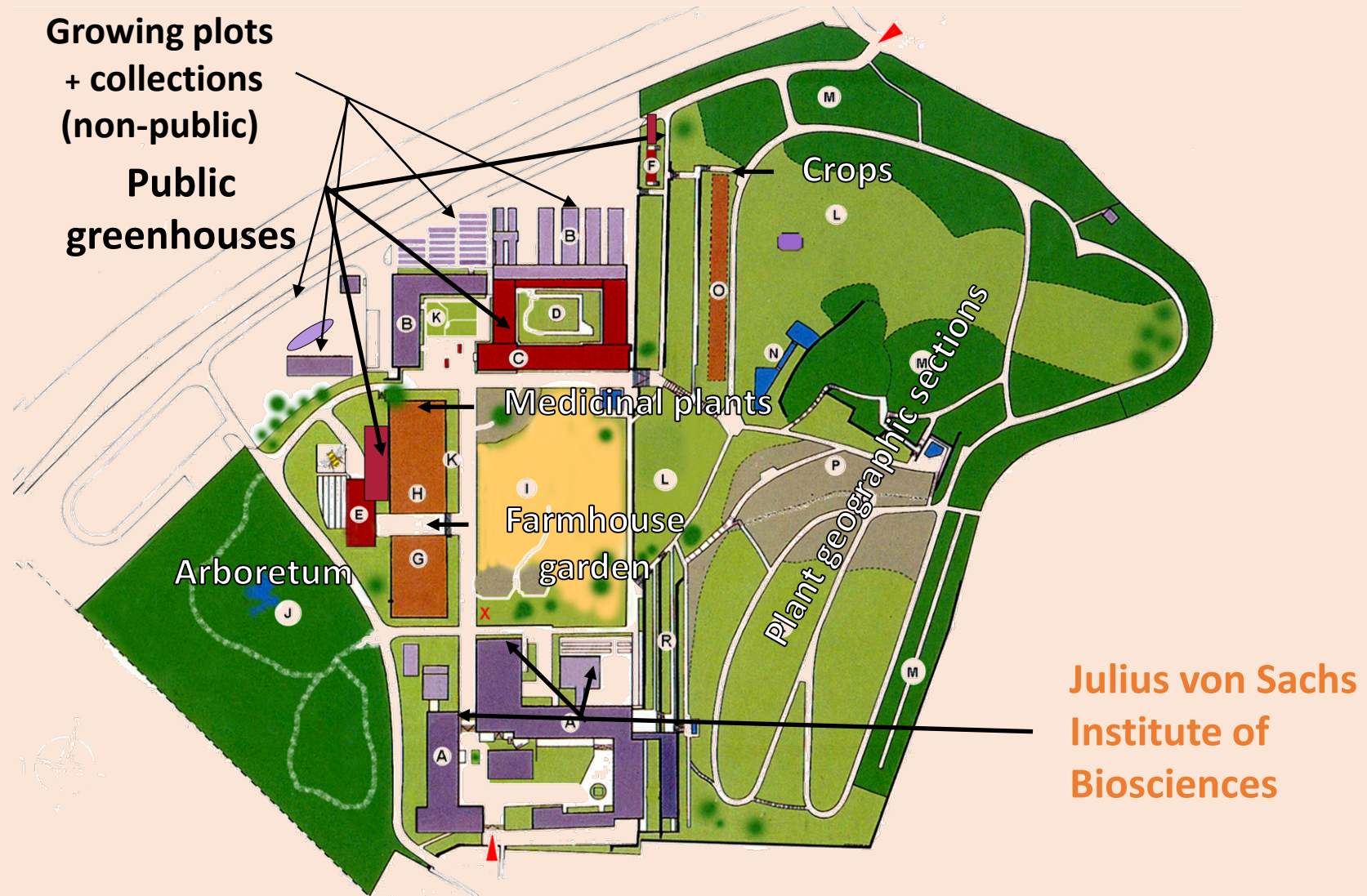
OurWorldinData.org – Research and data to make progress against the world's largest problems.

Licensed under CC-BY by the authors Hannah Ritchie and Max Roser.



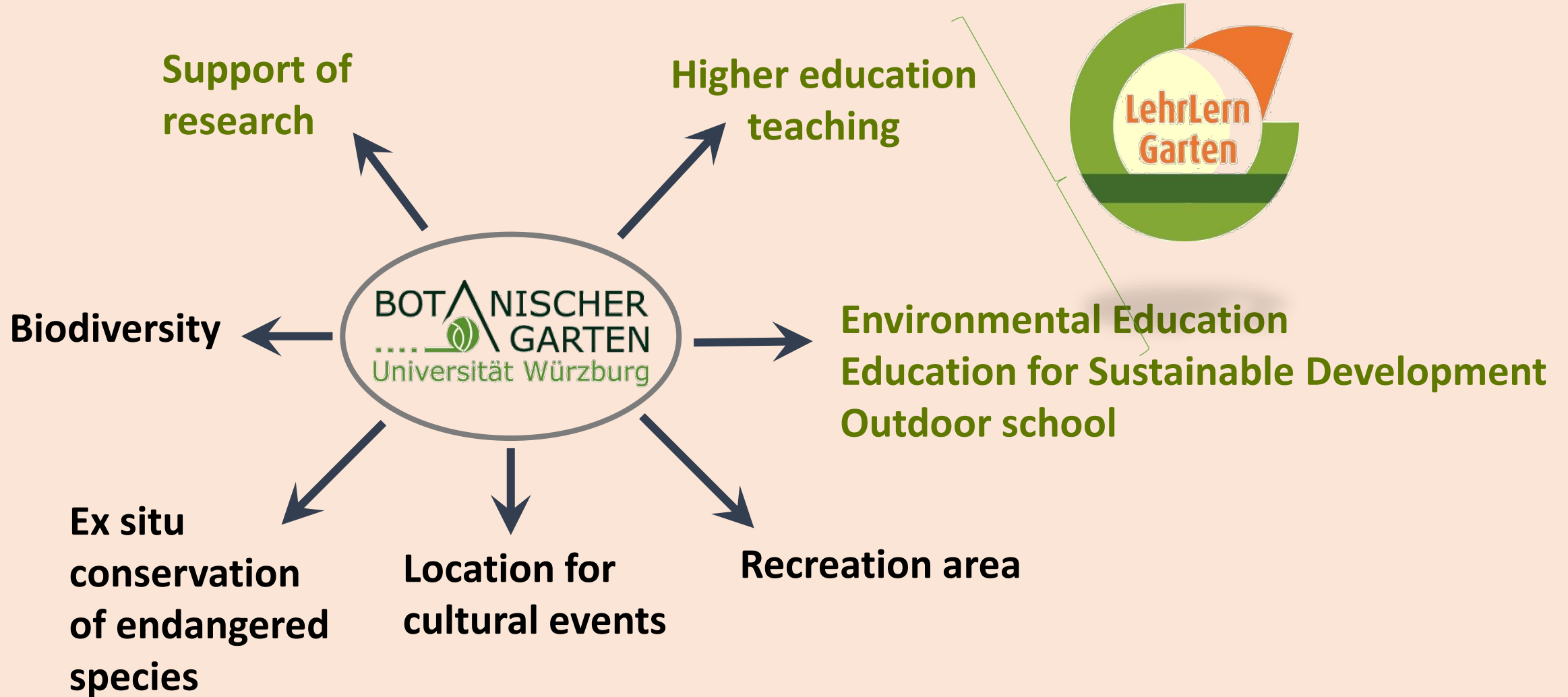








# Why do we actually need a botanical garden?





# Guided tours

- |               |                                                 |
|---------------|-------------------------------------------------|
| <b>Tour 1</b> | <b>Outdoor, in German, Gerd Vogg</b>            |
| <b>Tour 2</b> | <b>Greenhouses, in English, Markus Riederer</b> |

# Contacts

## **Prof. Dr. Markus Riederer**

Tel. +49 931 3186200

Email [riederer@uni-wuerzburg.de](mailto:riederer@uni-wuerzburg.de)

## **Dr. Gerd Vogg**

Tel. +49 931 3186239

Email [gerd.vogg@botanik.uni-wuerzburg.de](mailto:gerd.vogg@botanik.uni-wuerzburg.de)